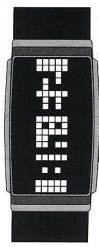


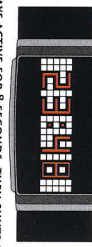
EXAMPLE DISPLAY
[VERT] TIME MODE
[24HR] SET
SHOWING TIME 23:48

HOW TO READ THE TIME

YOUR WATCH HAS 2 TIME DISPLAY MODES, THESE ARE [VERT] & [HORIZ]. THE HORIZONTAL MODE IS THE DEFAULT MODE.



THE TIME ABOVE SHOWS [23:48]. THE NUMBERS ARE SEEN BY LOOKING AT THE BLACK SPACE. (NEGATIVE SPACE)



THE LIGHT STAYS ACTIVE FOR 8 SECONDS, THEN SHUTS OFF TO SAVE BATTERIES.

IN [VERT] VERTICAL MODE, THE TIME DISPLAY LOOKS LIKE THE LARGE PICTURE TO THE LEFT.

HOW TO READ THE DATE

■ PRESS BUTTON **B** TWICE TO DISPLAY THE DATE USING THE LED LIGHT.



THE DATE SHOWS [MON 08 JUN 00]. THE NUMBERS & LETTERS ARE SEEN BY LOOKING AT THE BLACK SPACE.

HOW TO SET THE TIME & DATE

■ WHILE THE TIME IS DISPLAYED, PRESS & HOLD BUTTON **A** FOR A FEW SECONDS. YOU WILL NOW PROCEED THROUGH SEVERAL SCREENS WHERE YOU MAY SET THE TIME, DATE & OTHER DISPLAY SETTINGS.

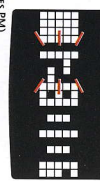
1 SELECT 12/24 HR MODE

- PRESS BUTTON **A** TO CHANGE BETWEEN [12HR] & [24HR].
- PRESS BUTTON **A** TO ACCEPT.



2 SET THE HOUR

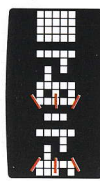
- THE HOUR DIGITS WILL BE FLASHING.
- PRESS BUTTON **B** TO CHANGE THE HOUR.
- PRESS BUTTON **A** TO ACCEPT.



(IN 12HR MODE A DOT ON THE RIGHT INDICATES PM)

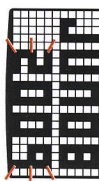
3 SET THE MINUTES

- THE MINUTE DIGITS WILL BE FLASHING.
- PRESS BUTTON **B** TO CHANGE THE MINUTES. (HOLD TO ADVANCE QUICKLY)
- PRESS BUTTON **A** TO ACCEPT.



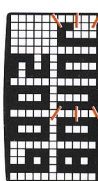
4 SET THE YEAR

- THE SCREEN WILL FLASH THE CURRENT YEAR.
- PRESS BUTTON **B** TO CHANGE THE YEAR.
- PRESS BUTTON **A** TO ACCEPT.



5 SET THE MONTH

- THE SCREEN WILL FLASH THE CURRENT MONTH.
- PRESS BUTTON **B** TO CHANGE THE MONTH.
- PRESS BUTTON **A** TO ACCEPT.



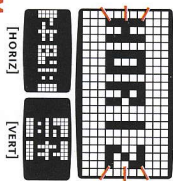
6 SET THE DATE

- THE SCREEN WILL FLASH THE CURRENT DATE.
- PRESS BUTTON **B** TO CHANGE THE DATE.
- PRESS BUTTON **A** TO ACCEPT. (THE DAY, MONDAY, TUESDAY ETC. WILL BE SET AUTOMATICALLY FROM YOUR PREVIOUS DATE SETTINGS)



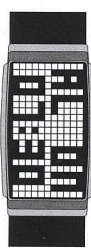
7 SET THE TIME DISPLAY MODE

- THE SCREEN WILL SHOW THE CURRENT MODE [HORIZ] OR [VERT].
- CHANGE THIS TO YOUR PREFERENCE.
- PRESS BUTTON **B** TO CHANGE THE MODE.
- PRESS BUTTON **A** TO ACCEPT.



HOW TO READ THE ALARM

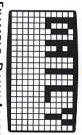
- WHILE THE TIME IS DISPLAYED, PRESS BUTTON **B** ONCE TO DISPLAY THE ALARM TIME.
- THE ALARM TIME HERE SHOWS [AL ON 0730] & INDICATES [AL ON] "ALARM ON" & THE TIME [0730]



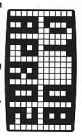
取扱説明書

取扱説明書

- PRESS BUTTON **B** TWICE TO DISPLAY THE ALARM DATE.



EXAMPLE DAILY ALARM



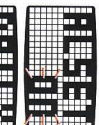
EXAMPLE DATE ALARM

HOW TO SET THE ALARM

■ WHILE THE DISPLAY IS ACTIVE, PRESS & HOLD BUTTON **A** FOR A FEW SECONDS. YOU WILL NOW PROCEED THROUGH SEVERAL SCREENS WHERE YOU MAY SET THE ALARM.

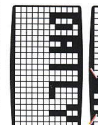
1 SELECT ALARM ON/OFF

- PRESS BUTTON **A** TO CHANGE BETWEEN [ON] & [OFF].
- PRESS BUTTON **A** TO ACCEPT.



2 SELECT ALARM TYPE

- PRESS BUTTON **B** TO CHANGE BETWEEN [DAILY] & [DATE].
- PRESS BUTTON **A** TO ACCEPT.
- THE [DAILY] ALARM TYPE WILL SOUND THE ALARM EVERYDAY AT THE ALARM TIME. THE [DATE] ALARM TYPE WILL ONLY SOUND THE ALARM ON A SPECIFIC DAY OF THE YEAR.
- IF YOU SELECT THE [DAILY] ALARM TYPE, YOU MAY NOW CONTINUE TO STEP 4.



3 SET ALARM DATE

- IN THE FOLLOWING 3 SCREENS YOU WILL SET THE YEAR, MONTH & DATE OF THE ALARM. ON EACH SCREEN PRESS BUTTON **B** TO CHANGE THE SETTING & BUTTON **A** TO ACCEPT.



4 SET ALARM TIME

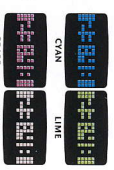
- IN THE FOLLOWING 2 SCREENS YOU WILL SET THE HOUR & MINUTES OF THE ALARM TIME. ON EACH SCREEN PRESS BUTTON **B** TO CHANGE THE SETTING & BUTTON **A** TO ACCEPT.



COLOUR MODES

(IN 12HR MODE A DOT ON THE RIGHT INDICATES PM)

- THE LED LIGHT WILL START FLASHING.
- PRESS BUTTON **B** TO CYCLE THROUGH THE DIFFERENT COLOURS.
- PRESS & HOLD BOTH BUTTON **A** & BUTTON **B** TOGETHER FOR SEVERAL SECONDS.
- THE LED LIGHT WILL START FLASHING, PRESS BUTTON **B** TO CYCLE THROUGH THE DIFFERENT COLOURS.
- PRESS BUTTON **A** TO ACCEPT & FINISH.



THE COLOUR MODES ARE: [BLUE] [GREEN] [CYAN] [RED] [GRAPE] [LIME] [VIOLET] [MULTI] (CERTAIN COLOURS ARE MORE EFFECTIVE AT NIGHT.)

BATTERY, WARRANTY AND CAUTIONS

YOUR WATCH USES A CR2032 LITHIUM BATTERY AVAILABLE AT ALL GOOD JEWELLERS WORLDWIDE. WE RECOMMEND THAT YOU ASK YOUR JEWELLER TO REFORM THE BATTERY. THE BATTERY IS EXPECTED TO LAST AT LEAST 1 YEAR.

YOUR WATCH IS 3ATM WATER RESISTANT. IT CAN RESIST RAIN & SPLASHES, BUT WE DO NOT RECOMMEND SWIMMING OR SHOWERING WHILE WEARING THE WATCH. IF YOU DO, PLEASE RINSE YOUR WATCH WITH FRESH WATER IMMEDIATELY. ONCE A YEAR, PLEASE RETURN YOUR RECEIPT AS PROOF OF PURCHASE. THE WARRANTY DOES NOT INCLUDE DAMAGE DUE TO CARELESS USE, BROKEN GLASS OR WATER DAMAGE. THANK YOU FOR YOUR PURCHASE! WE HOPE YOU ENJOY YOUR WATCH.